

**Discover a complete
dynamic ecosystem
around the cleanrooms
to enhance your development**

Collaborative Research Platform (PRC)



Prototyping
Process stabilization

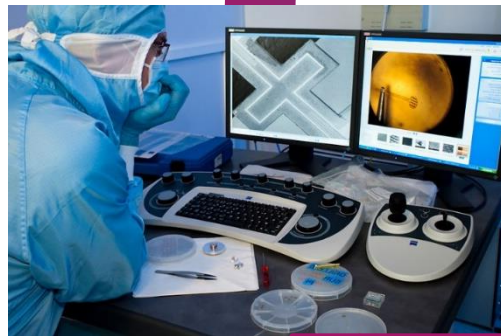
sense CITY

Test in quasi-real conditions

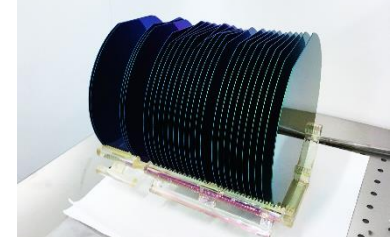


ESIÉE Paris
cleanrooms

Small batch manufacturing
Pre-industrialization



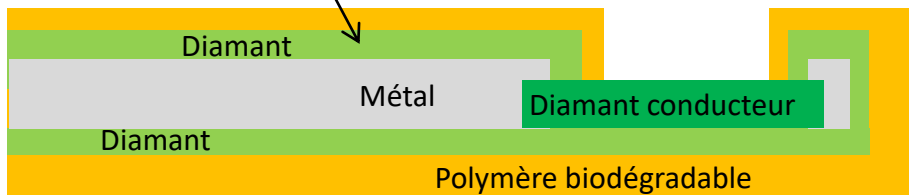
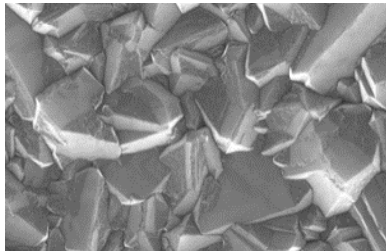
Academic
Research



▶ **Diamonds could become the brain's best friends**

NEURODIAM project, Lionel Rousseau (1.49 M€, 5 years)

- ▶ Long-term stable and flexible cortical implants for function rehabilitation
- ▶ Full-diamond Micro-Electrode Arrays for brain electrical stimulation



©Patent FR 1760074



en collaboration avec



▶ Collaborative Research Platform (PRC), 2017-2019

- ▶ Support to Small and Medium Enterprises less than 250 employees for innovative sensor fabrication with a more competitive cost
- ▶ Purchase of atmospheric and vacuum furnaces for thin layer growth and deposition on larger wafers (6-inch / 150 mm)



Co-funded by the European Fund for Regional Development ([FEDER](#)) and by the Program for Future Investments PIA2 [ESIEE Connect](#)



► Equipment of Excellence **sense**CITY

Nanosensors and Nanomaterials for Sustainable Cities



A technological platform
to test in quasi-real conditions
sensors for Sustainable Cities
after their prototyping in cleanrooms



- ▶ Merging of 6 establishments as Université Gustave Eiffel in 2020 (I-SITE project), located in Paris East



- ▶ Competitiveness hub



- ▶ A fertile ground to cultivate innovation



Service for Microelectronics and Microsystems (SMM)

ESIEE Paris - CCI en région Paris Ile-de-France

Cité Descartes / BP99

2, Boulevard Blaise Pascal

93162 NOISY-LE-GRAND Cedex, France

<https://www.esiee.fr/en/about-esiee/cleanrooms>

contact.smm@esiee.fr



Magdalèna COUTY, PhD.

Cleanroom Business Engineer

Tel: +33 (0)1 45 92 67 06 /

+ 33(0)6 73 64 67 02

E-mail : magdalena.couty@esiee.fr

Sylvie PARADOWSKI

Administrative Manager

Tel: +33 (0)1 45 92 67 40

E-mail : sylvie.paradowski@esiee.fr

Lionel ROUSSEAU, PhD., HDR

Head Deputy of the Service

Tel: +33 (0)1 45 92 60 91

E-mail : lionel.rousseau@esiee.fr